

2 0 0 7

C A N C E R P R O G R A M

Annual

R E P O R T



NORTH MISSISSIPPI
MEDICAL CENTER

CANCER CENTER

Cancer Committee

Members

- Raymond Orgler, M.D., Chairman, Liaison Physician
- Kevin Bond, M.D., Vice Chairman
- James Shirley, M.D., Liaison Physician
- Andrew Kellum, M.D., Medical Oncology
- Chris Bergmann, M.D., Diagnostic Radiology
- Montgomery Berry, M.D., Otolaryngology
- Carl Bevering, M.D., Neurosurgery
- Bert Duncan, M.D., Radiation Oncology
- Eric Emig, M.D., Diagnostic Radiology
- Richard Griswold, M.D., Pathology
- Jeff Houin, M.D., Dermatology
- Bill Kahlstorf, M.D., Gynecology
- Robert Yarber, M.D., Otolaryngology
- Robert McAuley, M.D., Surgery
- Charles Montgomery, M.D., Medical Oncology
- John Phillips, M.D., Gastroenterology
- Ray Reed, M.D., Radiation Oncology
- James Rish, M.D., Pulmonology
- Robert Derveloy, M.D., Cardiothoracic Surgery
- Brian Walker, D.O., Medical Oncology
- Elizabeth Fair, American Cancer Society
- Linda Roof, RN, Clinical Research & Outcomes
- Paula Turner, Director, Cancer Center
- Shelia Jinkins, CTR, Cancer Registry
- Cindy Edwards, LMSW, OSW-C
- Jeannine Peters, Pharm.D.
- Karen George, RN, BSN
- Chris West, Chaplain
- Tina Stevens, RN, Breast Care Center
- Harold Kornfuhrer, R.Ph., Oncology Service Line Administrator
- Joellen Murphree, Quality Management
- A.K. Aguirre, MPH, Clinical Research
- Donna Lewis, RN, Medical Service Line

Report from the Chairman Activities, Data Analysis and Liaison Report

It was another great year for the North Mississippi Medical Center Cancer Program. The Cancer Program had several goals that we realized to improve cancer care in North Mississippi. Our goals included an increase in physician attendance at the Cancer Conference, accurate/timely abstracting, follow-up, and 100 percent accuracy of National Cancer Data Base submission, establish lymphedema specialist, improve timely use of Hospice and measure outcomes in colon cancer by number of lymph nodes sampled. These goals were met, providing meaningful improvement to our overall cancer care at North Mississippi Medical Center.

We had a total of 1,627 analytical cases reviewed in our program this year. We had a total of 906 male and 721 female cases this year. The top five cancers were lung, prostate, breast, colon and lymphoma. We serviced a very large area with patients from 31 counties in Mississippi and eight counties in Alabama.

The NMMC Cancer Program was reviewed by the American College of Surgeons Commission on Cancer. The process was very rewarding, as the reviewer provided insight into our cancer program. The Cancer Program received an approval award for three years with commendation.

My duties as the Cancer Committee Chairman and Cancer Liaison Physician were involvement and leadership in the workings of the Cancer Committee and to be a “champion” for cancer care at our facility. I worked with our staff to prepare for the American College of Surgeons survey process. I helped implement the e-Quip data for stage III colon cancer patients. Our program had several outreach programs including prostate screenings, Barbershop Talk Program, Camp Bluebird, Relay for Life and Project Hope. We also helped provide a new support group for lymphedema patients.

The Cancer Conference is held each Thursday at noon at NMMC. The conference involves a multi-specialty approach to cancer care. The patients are discussed in depth with an emphasis on clinical staging. We have specialty conferences at least once a month including our top five primary sites, which attracts a group of physicians and other caregivers who are specifically focused on these sites. An example is the Thoracic Conference, which was started this year. The results of the lung report are listed in this report.

Other educational activities by the NMMC Cancer Conference included:

- “The Future of Cancer Care: Emerging Treatments & Advancements,” an oncology conference at NMMC
- Management Update on Head and Neck Cancer by Karen Pitman, M.D., Professor, Department of Otolaryngology and Communicative Sciences, UMC.
- New Perspectives in Oncology by Robert Hamilton, M.D., Assistant Professor, Department of Internal Medicine, Division of Oncology, UMC.

It was truly a very busy but rewarding year for the North Mississippi Medical Center Cancer Program.

Raymond J. Orgler Jr., M.D., F.A.C.S.
Chairman, Cancer Liaison Physician, Cancer Committee

Cancer Registry

Mission
Why we exist:

To help increase survival rates of people in our region with cancer.

Cancer Registry

Vision

What we want to be:

The provider of the most consistent and accurate cancer data available to the North Mississippi Medical Center Cancer Program.



NMMC Cancer Registrars

- Shelia Jinkins, CTR
- Jewell Johnson, CTR
- Sandra Oliver, CTR

The Cancer Registry at North Mississippi Medical Center is a vital component of the cancer program, providing data for program and administrative planning, research and monitoring patient outcomes. The multidisciplinary cancer program at NMMC functions within the guidelines of the American College of Surgeons (ACOS) Commission on Cancer. Data entered into the cancer registry database contains information on the diagnosis, extent of disease, treatment received and recurrence of the disease. Also, lifetime follow-up for all analytical cases is obtained. Continued surveillance ensures early detection of a possible recurrence or a new primary malignancy. In 2007, NMMC consistently exceeded the ACOS mandated follow-up rate of 90 percent.

A cancer registrar performs the collection, interpretation, analysis and reporting of cancer data. The National Cancer Registrars Association defines cancer registrars as data management experts who collect and report cancer statistics for various health care agencies. Registrars work closely with physicians, administrators, researchers and health care planners to provide support for cancer program development, ensure compliance of reporting standards, and serve as a valuable resource for cancer information with the ultimate goal of preventing and controlling cancer. The cancer registrar is involved in managing and analyzing clinical cancer information for the purpose of education, research and outcome measurement.

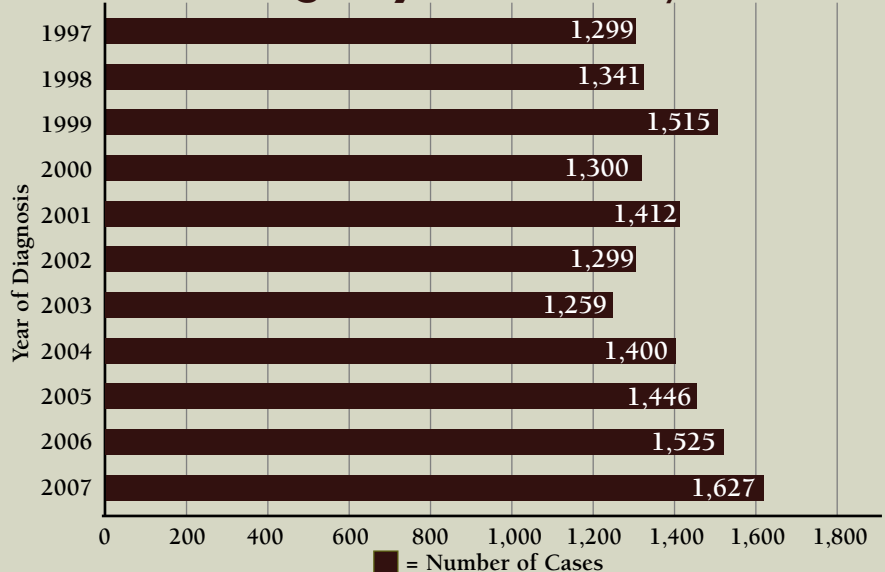
Registry data is submitted 100 percent error-free to the National Cancer Data Base (NCDB) annually as a requirement of the Commission on Cancer for all approved cancer programs. Submission of data to the NCDB provides feedback to assess the quality of patient care, enabling cancer programs to compare treatment and outcomes with regional, state and national patterns. Major differences between the facility data and the national data are reviewed in an effort to identify the reasons for these differences.

Cancer data is also submitted to the Mississippi Central Cancer Registry located in Jackson, as well as the Commission on Cancer Facility Information Profile System and the American Cancer Society. This information is used by researchers to determine cancer trends, treatment patterns, education and screening guidelines.

Caring for cancer patients is challenging today and promises to remain so in the future. Providing data to physicians so that they can see the results of their diagnostic and therapeutic efforts is essential. The NMMC Cancer Registry encourages utilization of its rapidly growing database.

Located at the NMMC Cancer Center, the registry is available Monday through Friday. **For information and statistics, call (662) 377-3053.**

Cancer Registry Cases Analytical Cases



Primary Site	Total (%)	Sex		Class of Case		Status		Stage Distribution-Analytic Cases Only							Blank/	
		M	F	Analy	NA	Alive	Exp	0	I	II	III	IV	88	Unk		Inv
Oral Cavity & Pharynx	41 (2.3%)	27	14	40	1	32	9	0	10	6	8	14	2	0	0	
Lip	2 (0.1%)	2	0	2	0	2	0	0	2	0	0	0	0	0	0	
Tongue	8 (0.5%)	4	4	7	1	7	1	0	3	0	1	3	0	0	0	
Salivary Glands	4 (0.2%)	2	2	4	0	3	1	0	2	1	0	0	1	0	0	
Floor of Mouth	2 (0.1%)	1	1	2	0	1	1	0	0	1	0	1	0	0	0	
Gum & Other Mouth	8 (0.5%)	4	4	8	0	8	0	0	1	4	1	2	0	0	0	
Nasopharynx	2 (0.1%)	2	0	2	0	1	1	0	0	0	1	1	0	0	0	
Tonsil	6 (0.3%)	4	2	6	0	5	1	0	1	0	2	3	0	0	0	
Oropharynx	5 (0.3%)	4	1	5	0	3	2	0	1	0	2	2	0	0	0	
Hypopharynx	3 (0.2%)	3	0	3	0	1	2	0	0	0	1	2	0	0	0	
Other Oral Cavity & Pharynx	1 (0.1%)	1	0	1	0	1	0	0	0	0	0	0	1	0	0	
Digestive System	279 (16.0%)	158	121	270	9	172	107	4	58	49	50	67	1	6	26	0
Esophagus	19 (1.1%)	16	3	19	0	7	12	0	1	3	4	7	0	4	0	
Stomach	26 (1.5%)	21	5	26	0	13	13	0	5	1	3	4	8	5	0	
Small Intestine	5 (0.3%)	2	3	5	0	4	1	0	1	0	1	0	3	0	0	
Colon Excluding Rectum	126 (7.2%)	60	66	121	5	94	32	3	27	28	29	29	1	4	0	
Cecum	24	10	14	24	0	17	7	2	2	6	5	7	0	2	0	
Appendix	2	2	0	2	0	1	1	0	0	0	0	1	1	0	0	
Ascending Colon	32	11	21	31	1	24	8	0	7	7	8	8	0	1	0	
Hepatic Flexure	6	3	3	6	0	2	4	0	1	3	2	0	0	0	0	
Transverse Colon	7	2	5	7	0	6	1	0	3	1	2	1	0	0	0	
Splenic Flexure	2	1	1	2	0	2	0	1	0	0	1	0	0	0	0	
Descending Colon	7	5	2	6	1	5	2	0	2	2	1	1	0	0	0	
Sigmoid Colon	42	24	18	40	2	34	8	0	12	7	10	10	0	1	0	
Large Intestine, NOS	4	2	2	3	1	3	1	0	0	2	0	1	0	0	0	
Rectum & Rectosigmoid	34 (1.9%)	17	17	34	0	30	4	1	8	10	2	6	0	7	0	
Rectosigmoid Junction	13	4	9	13	0	11	2	0	3	5	0	4	0	1	0	
Rectum	21	13	8	21	0	19	2	1	5	5	2	2	0	6	0	
Anus, Anal Canal & Anorectum	1 (0.1%)	0	1	0	1	1	0	0	0	0	0	0	0	0	0	
Liver & Intrahepatic Bile Duct	20 (1.1%)	16	4	20	0	5	15	0	9	1	4	2	1	3	0	
Gallbladder	3 (0.2%)	0	3	3	0	1	2	0	1	0	0	1	1	0	0	
Other Biliary	7 (0.4%)	6	1	6	1	2	5	0	1	1	0	2	0	2	0	
Pancreas	36 (2.1%)	20	16	34	2	13	23	0	5	5	7	15	1	1	0	
Peritoneum, Omentum & Mesent	2 (0.1%)	0	2	2	0	2	0	0	0	0	0	1	1	0	0	
Respiratory System	336 (19.2%)	219	117	332	4	155	181	1	93	15	89	129	5	0	0	
Nasal Cavity, Middle Ear & Acc	6 (0.3%)	5	1	6	0	5	1	0	3	0	1	1	1	0	0	
Larynx	18 (1.0%)	15	3	18	0	14	4	1	8	1	3	5	0	0	0	
Lung & Bronchus	312 (17.8%)	199	113	308	4	136	176	0	82	14	85	123	4	0	0	
Bones & Joints	2 (0.1%)	1	1	2	0	2	0	0	0	0	0	0	1	1	0	
Bones & Joints	2 (0.1%)	1	1	2	0	2	0	0	0	0	0	0	1	1	0	
Soft Tissue	10 (0.6%)	8	2	10	0	9	1	0	3	3	1	0	0	3	0	
Soft Tissue (including Heart)	10 (0.6%)	8	2	10	0	9	1	0	3	3	1	0	0	3	0	
Skin Excluding Basal & SQ	57 (3.3%)	31	26	51	6	49	8	8	25	4	7	6	0	1	0	
Melanoma -- Skin	54 (3.1%)	29	25	48	6	47	7	8	24	4	6	5	0	1	0	
Other Nonepithelial Skin	3 (0.2%)	2	1	3	0	2	1	0	1	0	1	1	0	0	0	
Breast	222 (12.7%)	1	221	205	17	211	11	33	84	53	23	11	0	1	0	
Breast	222 (12.7%)	1	221	205	17	211	11	33	84	53	23	11	0	1	0	
Female Genital System	97 (5.5%)	0	97	75	22	83	14	27	20	8	12	5	1	2	0	
Cervix Uteri	47 (2.7%)	0	47	39	8	43	4	24	6	2	6	0	0	1	0	
Corpus & Uterus, NOS	26 (1.5%)	0	26	19	7	23	3	0	10	4	2	1	1	1	0	
Corpus Uteri	25	0	25	18	7	23	2	0	10	4	2	1	0	1	0	
Uterus, NOS	1	0	1	1	0	0	1	0	0	0	0	0	1	0	0	

Primary Site	Total (%)	Sex		Class of Case		Status		Stage Distribution-Analytic Cases Only					Blank/		
		M	F	Analy	NA	Alive	Exp	0	I	II	III	IV	88	Unk	Inv
Ovary	16 (0.9%)	0	16	11	5	9	7	0	2	1	4	4	0	0	0
Vagina	2 (0.1%)	0	2	1	1	2	0	0	0	1	0	0	0	0	0
Vulva	6 (0.3%)	0	6	5	1	6	0	3	2	0	0	0	0	0	0
Male Genital System	292 (16.7%)	292	0	247	45	277	15	1	2	217	12	15	0	0	0
Prostate	286 (16.4%)	286	0	241	45	272	14	0	0	217	9	15	0	0	0
Testis	4 (0.2%)	4	0	4	0	4	0	0	2	0	2	0	0	0	0
Penis	2 (0.1%)	2	0	2	0	1	1	1	0	0	1	0	0	0	0
Urinary System	122 (7.0%)	85	37	119	3	99	23	40	45	11	11	10	0	2	0
Urinary Bladder	61 (3.5%)	50	11	61	0	47	14	38	6	8	3	5	0	1	0
Kidney & Renal Pelvis	59 (3.4%)	34	25	56	3	51	8	2	39	2	8	5	0	0	0
Ureter	1 (0.1%)	1	0	1	0	1	0	0	0	1	0	0	0	0	0
Other Urinary Organs	1 (0.1%)	0	1	1	0	0	1	0	0	0	0	0	0	1	0
Brain & Other Nervous Sys	43 (2.5%)	16	27	43	0	29	14	0	0	0	0	0	43	0	0
Brain	27 (1.5%)	13	14	27	0	16	11	0	0	0	0	0	27	0	0
Other Nervous System	16 (0.9%)	3	13	16	0	13	3	0	0	0	0	0	16	0	0
Endocrine System	36 (2.1%)	12	24	36	0	36	0	0	19	2	2	5	8	0	0
Thyroid	28 (1.6%)	5	23	28	0	28	0	0	19	2	2	5	0	0	0
Other Endo.(including Thym.)	8 (0.5%)	7	1	8	0	8	0	0	0	0	0	0	8	0	0
Lymphomas	77 (4.4%)	44	33	75	2	61	16	0	24	17	17	14	0	3	0
Hodgkin Lymphoma	9 (0.5%)	5	4	9	0	9	0	0	1	4	4	0	0	0	0
Hodgkin - Nodal	8	4	4	8	0	8	0	0	1	4	3	0	0	0	0
Hodgkin - Extranodal	1	1	0	1	0	1	0	0	0	0	1	0	0	0	0
Non-Hodgkin Lymphoma	68 (3.9%)	39	29	66	2	52	16	0	23	13	13	14	0	3	0
NHL - Nodal	42	23	19	41	1	31	11	0	9	10	12	9	0	1	0
NHL - Extranodal	26	16	10	25	1	21	5	0	14	3	1	5	0	2	0
Multiple Myeloma	20 (1.1%)	10	10	19	1	13	7	0	0	0	0	0	19	0	0
Multiple Myeloma	20 (1.1%)	10	10	19	1	13	7	0	0	0	0	0	19	0	0
Leukemias	12 (0.7%)	7	5	11	1	5	7	0	0	0	0	0	11	0	0
Lymphocytic Leukemia	3 (0.2%)	2	1	2	1	2	1	0	0	0	0	0	2	0	0
Myeloid & Monocytic Leukemia	8 (0.5%)	4	4	8	0	3	5	0	0	0	0	0	8	0	0
Acute Myeloid Leukemia	6	2	4	6	0	2	4	0	0	0	0	0	6	0	0
Acute Monocytic Leukemia	1	1	0	1	0	0	1	0	0	0	0	0	1	0	0
Chronic Myeloid Leukemia	1	1	0	1	0	1	0	0	0	0	0	0	1	0	0
Other Leukemia	1 (0.1%)	1	0	1	0	0	1	0	0	0	0	0	1	0	0
Mesothelioma	3 (0.2%)	2	1	3	0	0	3	0	0	1	1	1	0	0	0
Mesothelioma	3 (0.2%)	2	1	3	0	0	3	0	0	1	1	1	0	0	0
Kaposi Sarcoma	2 (0.1%)	2	0	2	0	2	0	0	0	0	0	0	2	0	0
Kaposi Sarcoma	2 (0.1%)	2	0	2	0	2	0	0	0	0	0	0	2	0	0
Miscellaneous Sites	38 (2.2%)	25	13	37	1	17	21	0	0	0	0	0	37	0	0
Miscellaneous Sites	38 (2.2%)	25	13	37	1	17	21	0	0	0	0	0	37	0	0
Invalid**	59 (3.4%)	37	22	50	9	47	12	1	21	24	2	0	1	1	0
Invalid	59 (3.4%)	37	22	50	9	47	12	1	21	24	2	0	1	1	0
Total	1,748	977	771	1,627	121	1,299	449	115	404	410	235	277	146	40	0

- This report excludes primary sites with a count of 0.
- Groups in gray font aggregate to form the category immediately above the first item in the group.

Note:

** Invalid Site group includes:

- Any site or histology code not within valid range or site code not found in the primary site table.
- Cases with unusual primary site/histology codes that have been over-ridden in an edit.
- Sites with a primary site code of C44* with histology codes 8000-8110.

Invalid Site group does NOT include cases where the Behavior Code is 0 or 1.

(NAACCR Volume III, Data Analysis and Reporting, Process Standards Chapter III.B.1)



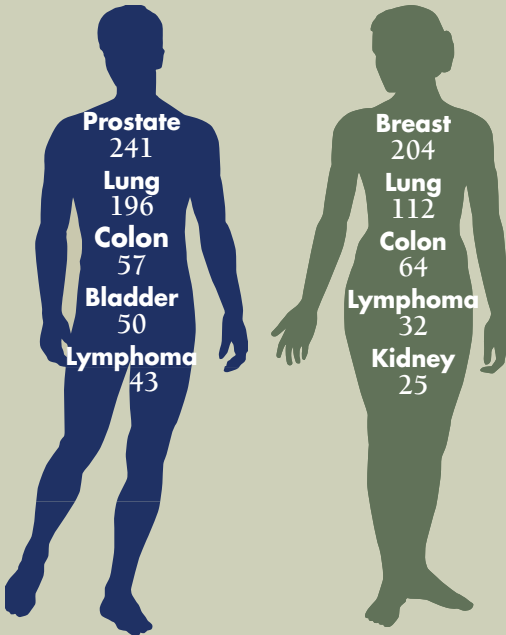
Demographic Data

Data

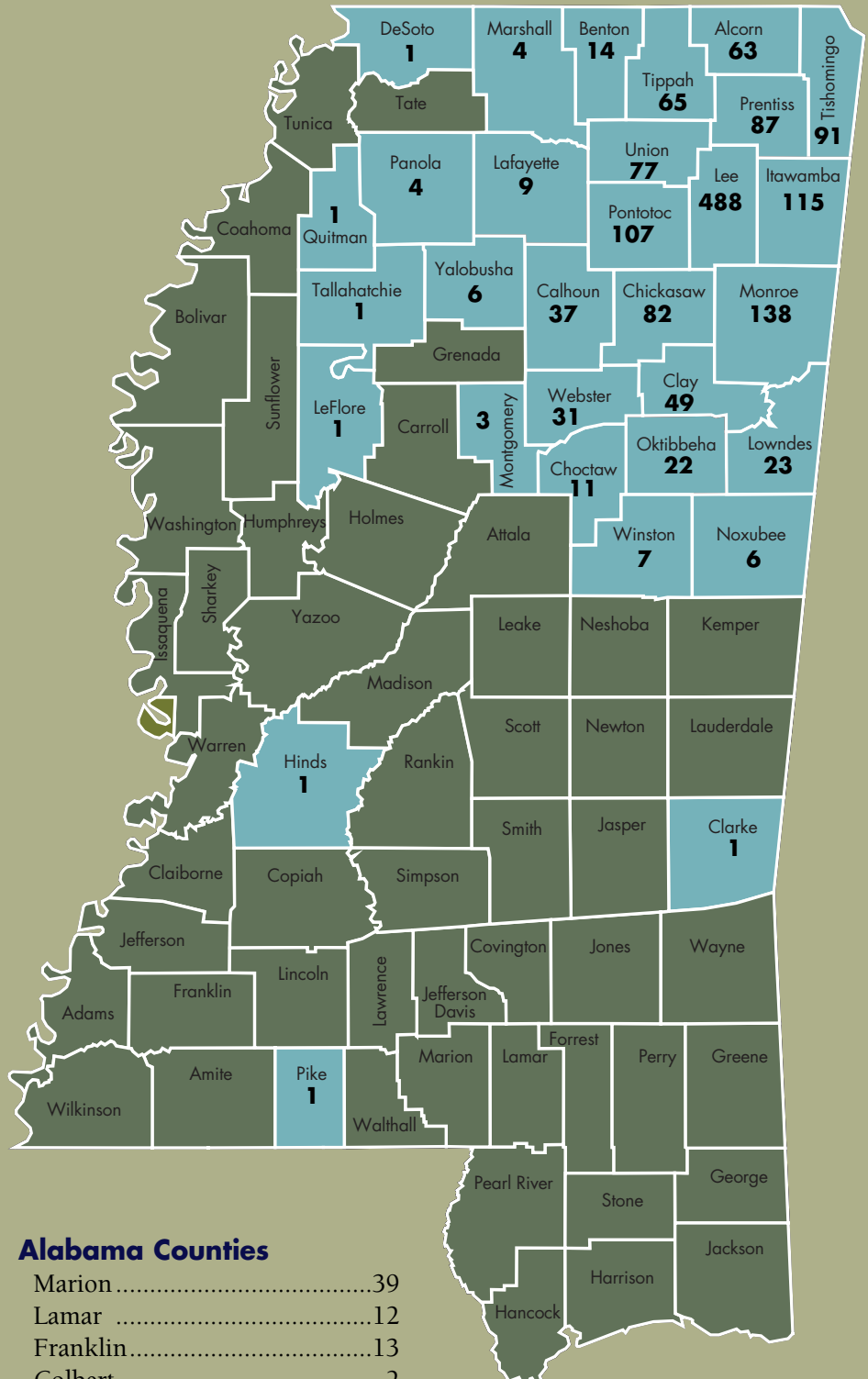
All Analytic Patients



Top Five Primary Sites



Geographic Location:



Sex/Race

Male.....	906 (total)
Caucasian	755
African-American	147
Other	4
Female.....	721 (total)
Caucasian	598
African-American	117
Other	6
Analytic	1,627
Non-analytic.....	121

Total cases for 20071,748

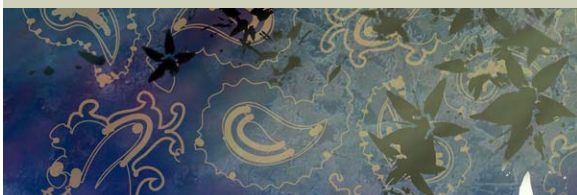
Age at Diagnosis:

1,627 Analytic Cases

29 & Younger.....	20
30-39	49
40-49	152
50-59	307
60-69	453
70-79	406
80-89	213
90+	27

Alabama Counties

Marion.....	39
Lamar	12
Franklin.....	13
Colbert.....	2
Pickens	2
Fayette.....	1
Tuscaloosa	1
Winston.....	1
Other	10
Alabama.....	71
Mississippi	1,546
Total	1,627



Analysis of Lung Cancer

Site Specific Analysis of Non-Small Cell Lung Cancer

Mission

We will provide expedient, high quality care, using "best practice" to diagnose, treat and improve outcomes of all who are diagnosed with lung cancer.

Vision

To be the provider of choice in all aspects of lung cancer, diagnosis and treatment.

Lung Center, Cancer Care Team

Pulmonologist, Thoracic Surgeon, Radiation and Medical Oncologists, Oncology Research, Data Analyst, Administration, Lung Center Coordinator, Pulmonary Rehabilitation, Respiratory Therapy and Radiology

Risk Factors

The No. 1 risk factor for lung cancer is smoking, and it is estimated that 90 percent of patients diagnosed with non-small cell lung cancer have a history of smoking. Other risk factors include exposure to secondhand smoke, asbestos and radon.

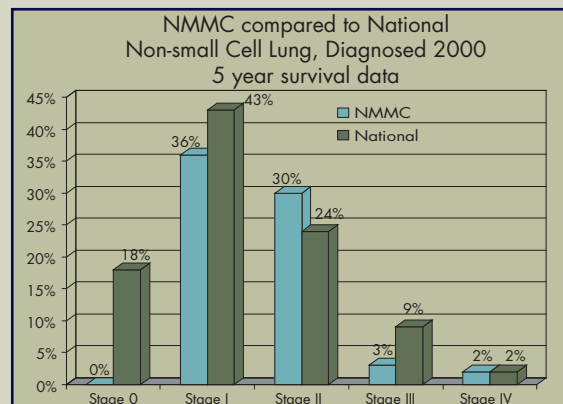
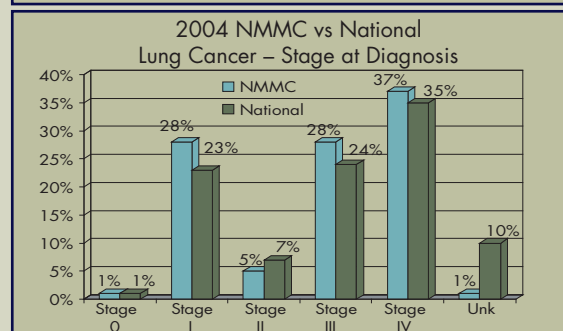
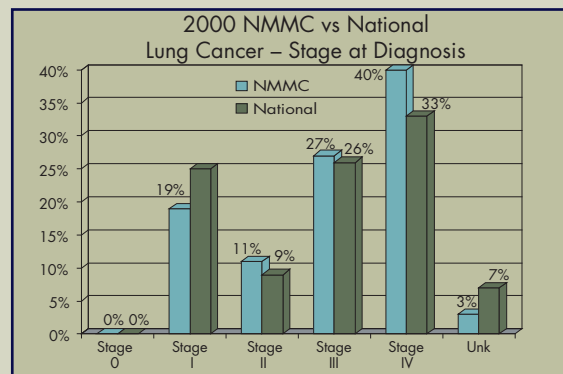
Goals

- Decrease time from presentation to treatment in all patients with lung cancer (national benchmark is <30 days)
- Improve patient satisfaction by providing a contact for lung cancer patients to call with questions or concerns
- Diagnose patients at an earlier stage (improve outcomes of people diagnosed with lung cancer)
- Utilize national guidelines to provide consistent "best care"
- Facilitate relationship with General Practitioners and other disciplines
- Provide new technology and new research for our patients
- Increase number of patients treated at our facility
- Collect and monitor appropriate data
- Improve patient education about diagnosis and treatment options
 - provide educational material consistent to national cancer programs
 - all disciplines provide the same information

At this time there is no recommended screening process, but work continues in this area including improved imaging techniques.

Prognosis

The prognosis for lung cancer remains poor as lung cancer is the No. 1 cause of cancer-related mortality. For early stage lung cancer without lymph node involvement the five-year survival after surgery is as high as 65 percent. However, 85 percent of patients present with advanced disease and the five-year survival for stage III cancer is only 9 percent and 2 percent for stage IV disease. The following graph compares the observed five-year survival rate (by stage) for North Mississippi Medical Center compared to the national rate. The overall survival for NCDB is 15.3 percent and NMMC is 13.3 percent.





The North Mississippi Medical Center Cancer Center

staff is dedicated to helping patients battle cancer – and that goes beyond administering treatments and medications. Each year, NMMC hosts Cancer Survivor Day to honor and recognize cancer survivors. In addition, the staff is active in the Komen North Mississippi Race for the Cure and hosts fundraisers each year for the NMMC Cancer Center Patient Assistance Fund, which assists qualified cancer patients with medications, transportation and other necessities while they are undergoing treatment.

Camp Bluebird

A special camp for adults who have been diagnosed with cancer

Camp Bluebird is held each April and September at Tombigbee State Park, about 10 minutes outside of Tupelo.

“Camp Bluebird, which is co-sponsored by North Mississippi Medical Center and the AT&T TelecomPioneers, provides campers with a few days of rest, recreation and the opportunity to share experiences,” said Camp Bluebird director Cheri Nipp, an occupational therapist at Baldwin Nursing Facility.

Campers are encouraged to participate in a variety of activities ranging from arts and crafts to educational programs.

Each camper in the medically supervised camp will be assigned a counselor, who is an NMMC staff member or AT&T TelecomPioneer. Counselors complete a special training session prior to their participation.

“Camp Bluebird has quite a loyal following. Many of our campers and counselors come back year after year because the experience helped them at a time in their lives when they needed it, and they also enjoy spending time with the many special friends that they have made,” Nipp said.

The cost of the camp is \$40 per person. Scholarships are available to those who need financial assistance. All campers sleep on bunkbeds in dormitory facilities and bring their own toiletry items, linens, comfortable clothing and walking shoes. The registration fee includes meals, a Camp Bluebird T-shirt and any materials needed for special programs or activities.



Midnite Pottery Butterflies

Midnite Pottery and the NMMC Cancer Center have partnered to raise money for local cancer patients through the sale of a series of original butterfly art. The second in the series is currently on sale, and the third will debut at the annual Spirit of Women Getaway, Jan. 24, 2009.

Local artists Jennifer Hankins and Dean Webb created the pottery butterfly to be sold exclusively by the NMMC Cancer Center. The 2008 butterfly features a chocolate glaze with touches of ocean and lime green. Each butterfly is accented with a unique wire, colored bead and metal “word of inspiration” tag. Some of the butterflies have a pink bead for breast cancer.

Each butterfly sells for \$20 and benefits the NMMC Cancer Patient Assistance Fund, which is administered by the Health Care Foundation of North Mississippi.

The duo has also created a large pottery platter featuring the butterfly motif on a chocolate brown background with ocean and lime green polka dots. The limited edition platter sells for \$60 and also benefits the NMMC Cancer Patient Assistance Fund.

“Each of us knows someone touched by cancer,” Hankins said. “This is a great project to help people in need. You never know when that person could be you.”

Each of the butterflies are displayed at the NMMC Cancer Center.

“We are thrilled that Midnite Pottery has agreed to create a new limited edition piece each year to benefit our patient assistance fund. Last year’s butterfly pieces raised approximately \$5,000 for our patient assistance fund,” said NMMC Cancer Center Director Paula Turner. “This fund assists cancer patients with anti-nausea and pain medicine, transportation to and from cancer treatment, and nutritional supplements. Once a patient’s application is approved, he or she is added to the list of those qualified to receive assistance.”

The fund assists an average of 100 patients each month for an annual cost of \$220,000. Cancer Patient Assistance Fund monies are raised through an annual fundraiser as well as donations given by family members in memory or honor of a cancer patient. NMMC employees also donate approximately \$7,000 each month through payroll deduction.

For more information about the butterfly pottery pieces, call Cindy Edwards, NMMC Cancer Center social worker, at (662) 377-4049.



Take a Swing at Cancer Benefit Golf Tournament

Each year, the Health Care Foundation of North Mississippi sponsors the annual Take a Swing at Cancer Benefit Golf Tournament.

The 14th annual tournament will be held Monday, May 18, 2009 at Old Waverly in West Point.

Proceeds benefit the North Mississippi Medical Center Cancer Center Patient Assistance Fund, which provides about \$220,000 annually for needy patients and their families who qualify for assistance.

“Last year’s tournament raised \$54,000 for patients in approximately 24 counties in northeast Mississippi and northwest Alabama,” said Tommy Morgan, tournament chairman. “The fund is used to provide medicine, transportation, nutritional supplements and other necessities for patients who are undergoing treatment.”

The golf tournament is organized by community volunteers from across the region, as well as representatives from the Health Care Foundation and the NMMC Cancer Center.

The cost is \$250 per player for the four-person scramble. There will be two flights offered – one morning and one afternoon. Golfers who are cancer survivors will receive special recognition.

More information regarding registration and start time will be available in Spring 2009.

The entry fee will include 18 holes of golf, cart fee, lunch, registration gift, door prize entry and the evening social. Prizes will be awarded for first and second place finishers as well as for longest drive and closest to the pin.

Sponsorship opportunities are available for companies interested in helping this cause.

For more information on the Take a Swing at Cancer Benefit Golf Tournament, call (662) 377-2376 or 1-800-THE DESK (1-800-843-3375), or log on to www.nmhs.net/hcf/take_a_swing.

Cancer Support Groups

NMMC’s Cancer Center offers the following support groups for cancer patients and their families. These groups allow cancer patients the opportunity to share common experiences, problems and solutions. They also provide an avenue for patients to talk confidentially with others who are coping with and surviving cancer.

Life After Diagnosis.

A breast cancer survivor support group that meets at 5:30 p.m. the fourth Tuesday of each month except June, November and December at the NMMC Breast Care Center, 500 S. Eason Blvd.

Man to Man.

Helps men diagnosed with prostate cancer and their families find answers to common concerns. The group meets at 6 p.m. the first Tuesday of each month, except July, in the NMMC East Tower Education Center, 830 S. Gloster St.

Survivor 101.

Open to newly diagnosed cancer patients and caregivers. The six-week program meets at 2 p.m. the fourth Thursday of each month at the Cancer Center, 990 S. Madison St.

For more information, call 1-800-THE DESK (1-800-843-3375).

Support Services & Community Outreach Programs

Barbershop Talk.

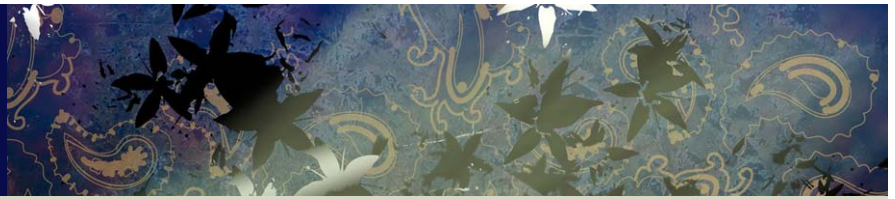
A collaborative community program between the NMMC Cancer Center and area barbers that targets the African-American male population and provides educational information on early screenings for prostate and colon cancers. For more information, call (662) 377-4077.

Guided Imagery.

A relaxation session that can help combat some side effects associated with a cancer diagnosis and treatment by focusing on healthful changes in the body and mind. For more information, call (662) 377-4049.

Continued on next page...





Home Health.

The NMMC Home Health Agency offers patients a range of services, including skilled and specialty nursing and rehabilitation. Technology has developed to the point that almost any service available in the hospital can be delivered in the home setting with some modification. For more information, call (662) 377-2499.

Hospice.

Hospice care is a specialized program to help manage pain and other symptoms associated with terminal illness. Chaplains, dietitians, social workers, nurses, therapists and volunteers are available to meet with patients and speak frankly about cancer and other life-limiting illness, share ideas and offer support. Services are available regardless of ability to pay. For more information, call 1-800-852-4910.

Massage Therapy.

To further enhance the healing process, the Cancer Center offers free mini-massages for cancer patients.

Mobile Mammography.

The mobile mammography unit travels to area communities and offers easy access to screening mammograms at hospitals, physicians' offices, businesses and industries throughout north Mississippi and northwest Alabama. This special community service encourages preventive breast health and early detection of breast cancer. When breast cancer is caught early, survival rate increases to 90 percent. Call (662) 377-7984 or (662) 377-4910 for an appointment or more information.

Nutrition.

When fighting cancer, good nutrition becomes even more important. Working with physicians, nurses, patients and families, a registered dietitian develops goals for patients based on a comprehensive nutritional assessment.

Palliative Care Program.

Palliative care uses an interdisciplinary approach to provide the comprehensive care and management of the physical, psychological, emotional and spiritual needs of patients of all ages, and their families with chronic debilitating or life-limiting illnesses. For more information, call (662) 377-3810.

Pastoral Care.

An NMMC Pastoral Care chaplain visits the Cancer Center to assist patients with spiritual needs. For more information, call (662) 377-3439.

Radiation Oncology Clinician.

The radiation oncology clinician meets with the NMMC Cancer Center treatment team to discuss patients' treatment plans, and helps educate patients and family members.

Resource Center.

The NMMC Cancer Center offers access to a cancer resource center, where patients and their family members can learn about cancer prevention, detection and treatment. The center houses a collection of information, including magazines, medical journals and reference books, self-help publication and periodicals on health and medicine as well as video and audio tapes. New information is added regularly. A computer and Internet access is available for patients and family members to do research on cancer, and the Cancer Center is a Wi-Fi hotspot.

Transportation Assistance.

For those who qualify, a shuttle service or other transportation is available to help patients get to their treatments. For more information, call (662) 377-4077.

Social Services.

An oncology certified social worker helps patients and families handle the changes associated with a cancer diagnosis. Issues can include work-related stress, marriage and family disruptions, depression, anxiety, phobias, child and adolescent problems, well being and spiritual concerns. For more information, call (662) 377-4077.

Wellness Program.

Available at NMMC Wellness Centers in Baldwyn, Iuka, Pontotoc, Tupelo and West Point, the Cancer Wellness Program is for people receiving treatment for all types and stages of cancer. The program combines specifically prescribed exercise with education and support to guide a person through recovery. For more information, call (662) 377-4141.

