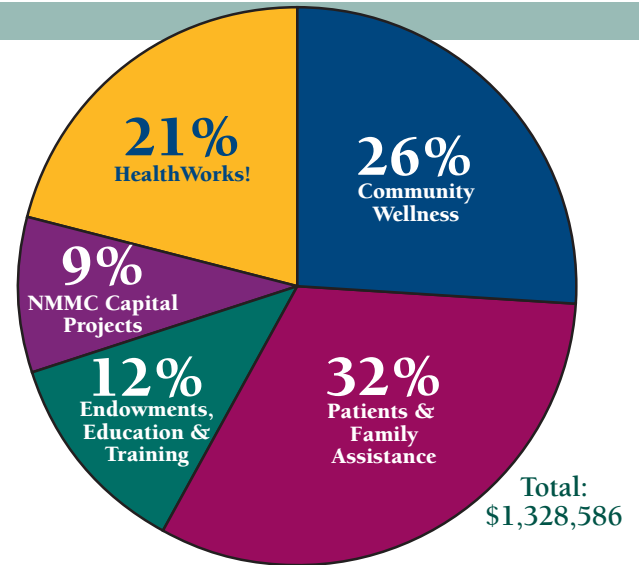


Foundation News

Centre Club Members Boost HCF Through 2008

Loyal support by Health Care Foundation Centre Club members – donors of \$100 or more – continues to be a major factor in the Foundation’s ability to provide financial resources for programs and services that improve the health of the people of this region. Through recent challenging economic conditions, Centre Club donations have helped bolster HCF’s ability to fund many important health programs that directly affect patients, patients’ families and community health. Contributions to HCF in 2008 were used to support a variety of projects, including:

- **Community Wellness and Outreach** – school and immunization nurses; Free Clinic and CATCH Kids assistance
- **Patient & Family Assistance** – Assistance funding for Cancer Center, Breast Care Center; Diabetes Treatment Center, Social Work, Heart Institute, Hospice and Home Health patients; NMMC Volunteer Courtesy Cart
- **Educational Endowment Programs** – Student scholarships and mentorships; Physician Shadowing Program; Let’s Pretend Hospital; employee training opportunities
- **Capital Projects** – NMMC Honor Guard; crash carts; AEDs; video training equipment
- **HealthWorks!** – the Foundation’s new children’s health education project received substantial support during 2008 from restricted capital campaign gifts. Pledges to the \$6 million campaign will continue to be paid through 2012.



Charitable Programs Funded in 2008

Employee Giving

NMHS system employees are an extremely important source of HCF donations. Of the Foundation’s 2,819 Centre Club members during 2008, 93 percent were health system employees. Approximately 40 percent of all NMHS/NMMC employees make annual payroll deducted contributions to HCF to support health improvement and assistance programs.

HCF Fundraising Expense

HCF’s expense for raising funds is primarily associated with printing, mailing, special events, consulting, service fees and recognition. Staff salaries and office support expenses are provided through NMHS, allowing fundraising expenses to remain relatively low at 18 percent of total expenses.

2009 & Beyond

Although recent investment market conditions have limited the Foundation’s ability to generate unrestricted grant funds for other important community health needs, we are optimistic that the environment will continue to improve throughout 2009 and beyond. HCF supporters may consider making unrestricted donations, allowing the Foundation greater flexibility to direct valuable support where it is most needed.

2008 HCF Highlights

January

- HCF sponsors 2008 **Women's Place Lunch-time Learning Series**. These monthly programs offer women a quick retreat from their hectic lifestyles so that they can join other women interested in improving their health as well as their family's. This is an important outlet because women make most of their family's health care decisions.
- **Pediatric patients** at NMMC-Tupelo benefit from video game systems and games donated by the Foundation.
- The Foundation funds a new program at Women's Hospital for grieving families. When a baby dies, the family is now given a **Bereavement Box** that holds the baby's personal items, such as the blanket, cap, thermometer and tape measure, along with educational materials and information about The Compassionate Friends, a local support group for families who have lost a child.



February

- The annual **Festival of Hope** awards \$53,400 in grants to the NMMC Heart, Cancer and Diabetes Patient Assistance funds as well as Camp Breathe Ezzzze, Camp Bluebird and Spirit of Women.
- HCF donates \$15,240 to the **Good Samaritan Free Clinic** to provide health care for the working poor.

March

- NMMC's **Honor Guard** celebrates its fifth year with a new sponsor, the Health Care Foundation of North Mississippi. Members perform flag ceremonies and postings, half-mast ceremonies, ceremonial guard station, other honorable ceremonies and flag etiquette classes for schools and scout groups.

April

- HCF helps sponsor **Camp Bluebird** in April and September at Tombigbee State Park for adult cancer survivors.

- HCF helps sponsor the third annual **Nurse Mentorship Academy** for students interested in a nursing career. Sessions meet for eight weeks, followed by 80 hours of paid certified nursing assistant training to prepare them for the certification exam and employment opportunities that can lead to a health care career.

May

- HCF awards \$22,000 in **scholarships** to graduating high school seniors pursuing a health care career. Five \$2,000 scholarships were presented by NMMC-Tupelo, four \$1,000 scholarships by NMMC-Pontotoc, and two \$1,000 scholarships each by NMMC hospitals in Eupora, Iuka, West Point and Hamilton, Ala.
- HCF helps children with asthma attend **Camp Breathe Ezzzze** at Tishomingo State Park. In addition to the educational aspect, the camp helps boost self-esteem and nurture friendships among children with asthma.
- **Southern Belle Originals** based in Calhoun City donates \$10,000 to the Health Care Foundation of North Mississippi for breast cancer patient assistance. The donation marks the first from proceeds of the company's "Southern Belles Do Believe in Miracles" T-shirt.



June

- HCF sponsors NMMC's annual **Physician Shadowing Program** for medical students. This program is made possible through donations to the Thomas Endowment, which covers hourly compensation, lab coat and support materials for each student.
- The 13th annual **Take a Swing at Cancer** benefit golf tournament at Old Waverly Golf Club raises approximately \$54,000 for the NMMC Cancer Center Patient Assistance Fund.

September

- Patients benefit from more than \$360,000 in assistance through the various NMMC **patient assistance funds** during fiscal year 2007-2008.

October

- The Brevard Health Care Endowment sponsors **Let's Pretend Hospital**, an opportunity for approximately 1,500 Tupelo and Lee County first-graders to learn from health care professionals in a simulated hospital setting.